



Aspern Grove NW3

Parkheath  
*Sold on Service*





## Aspern Grove, NW3, Asking Price £450,000, Leasehold

### Camden Band C

- Stylish 1 bedroom flat with balcony
- 14' bedroom
- Impressive 14' reception
- 10' semi-open plan kitchen
- 6' rear facing balcony
- 125 years from 2002
- Approaching 500 sq ft on first floor
- EPC energy rating C
- Set in modern local authority development
- Moments from all Belsize Park amenities



Belsize Park  
208 Haverstock Hill  
NW3 2AG  
Sales 020 7431 1234  
Lettings 020 7431 3104  
nw3@parkheath.com

South Hampstead  
8a Canfield Gardens  
NW6 3BS  
Sales 020 7625 4567  
Lettings 020 7644 0800  
nw6@parkheath.com

West Hampstead  
192 West End Lane  
NW6 1SG  
Sales & Lettings  
Tel 020 7794 7111  
192@parkheath.com

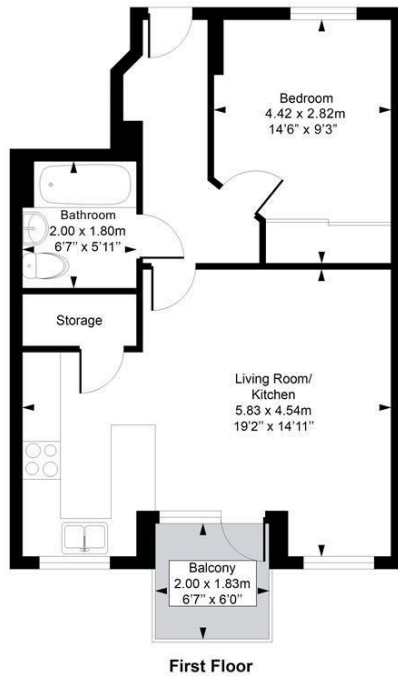
**Parkheath**  
*Sold on Service*

Kentish Town  
148 Kentish Town Rd  
NW1 9QB  
Tel 020 7485 0400  
kt@parkheath.com

Kensal Rise  
54-56 Chamberlayne Rd  
NW10 3JH  
Tel 020 8960 4845  
kensal@parkheath.com

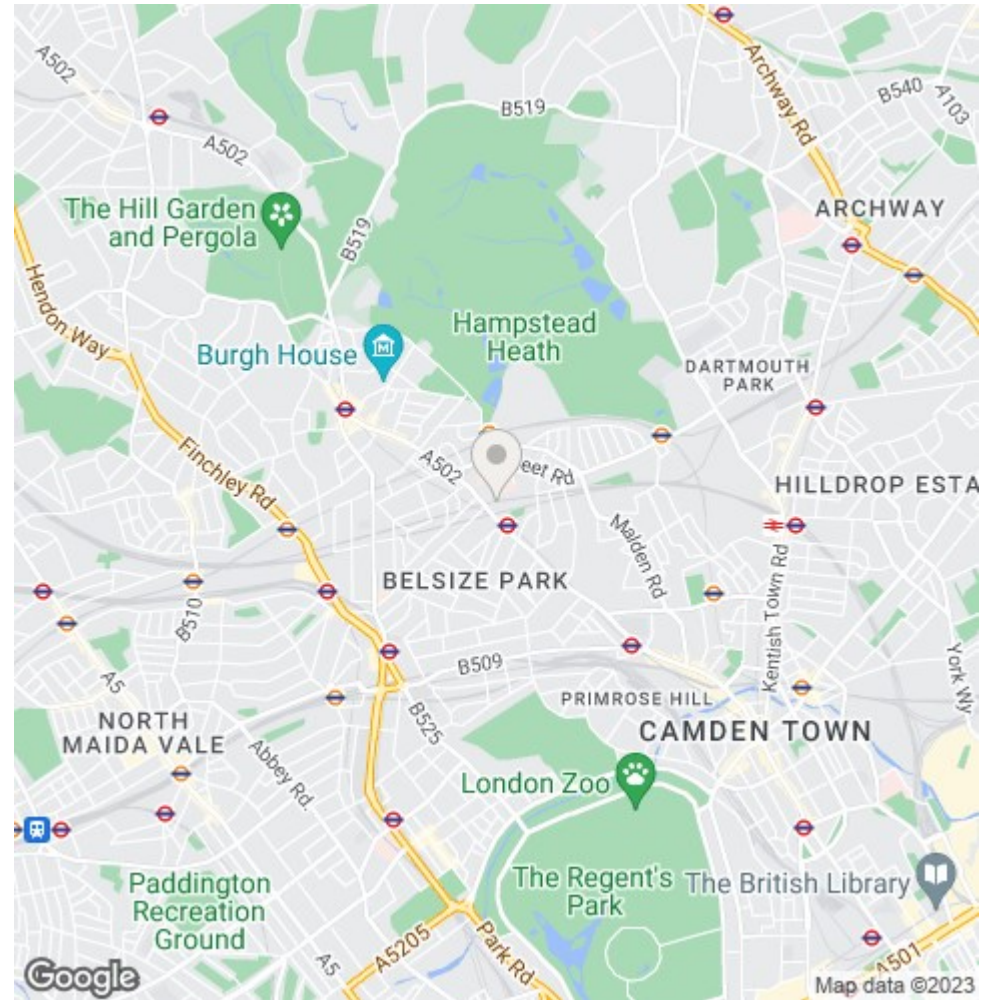
Property Management  
148 Kentish Town Rd  
NW1 9QB  
020 7433 6174  
pm@parkheath.com

**Aspern Grove**  
Approximate Gross Internal Area = 497 sq.ft / 46.2 sq.m



This plan is for layout guidance only. Drawn in accordance with RICS guidelines. Not drawn to scale unless stated. Windows & door openings are approximate. Whilst every care is taken in the preparation of this plan, please check all dimensions, shapes & compass bearings before marking any decisions reliant upon them.

ELLIE CLAIRE PHOTOGRAPHY LTD  
www.ellieclairephotography.com



The particulars do not constitute part of an offer or contract. The particulars, including text, photographs and plans, are for the guidance only of prospective purchasers/tenants and must not be relied upon as statements of fact. The descriptions provided therein represent the opinion of the author and whilst given in good faith should not be construed as statements of fact. Nothing in these particulars shall be deemed a statement that the property is in good condition or otherwise or that any services or facilities are in good working order. All measurements are approximate